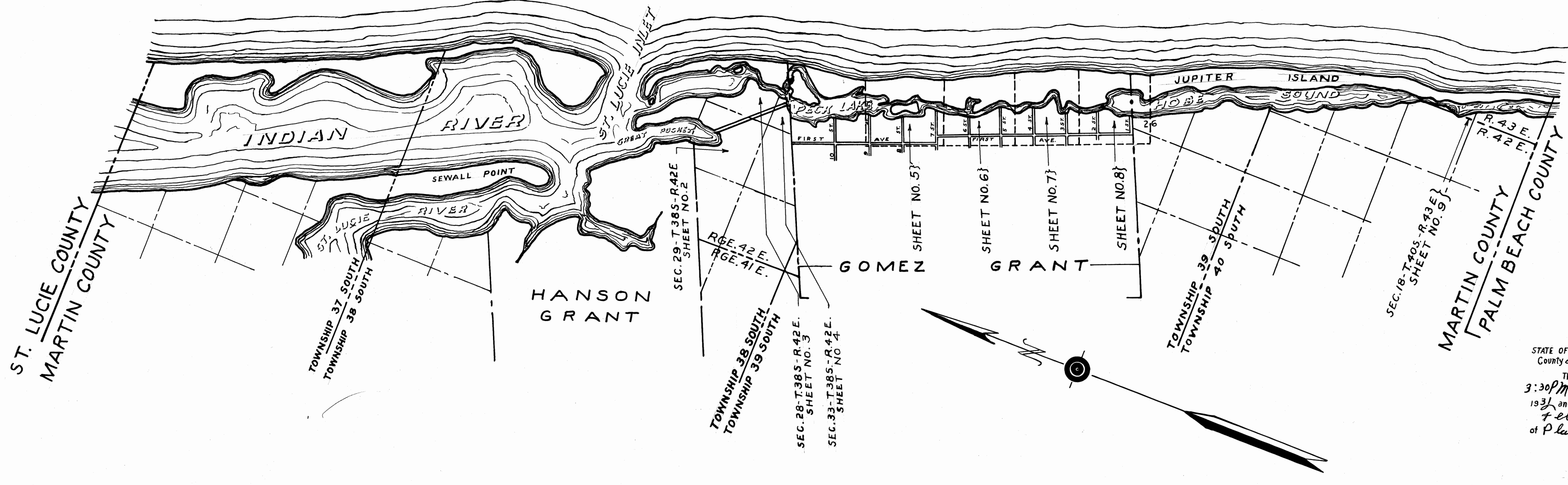


# ATLANTIC OCEAN



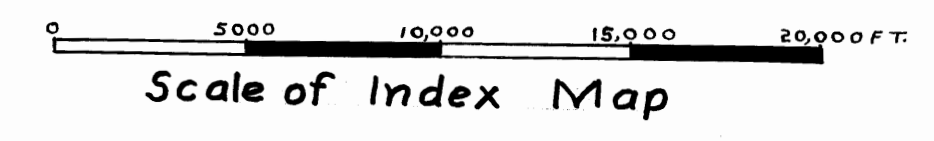
File No. 13244

STATE OF FLORIDA }  
 County of Martin } ss.  
 This instrument was filed for record at  
 3:30 PM this 19th day of Feb.  
 1931 and duly recorded on the 19th day of  
 Feb. 1931 in Book 2  
 of Plats on page 1-9 Record Verified  
*J.P. Pomeroy*  
 Clerk Circuit Court  
 By \_\_\_\_\_ D.C.

STATE OF FLORIDA : s.s.  
 COUNTY OF BROWARD:  
 KNOW ALL MEN BY THESE PRESENTS, that Florida Inland Navigation District created and existing under the laws of the State of Florida, has caused to be made this map of Florida East Coast Canal and the proposed Right of Way thereof for the purpose of locating certain tracts or parcels of land within said proposed right of way and to facilitate the description of said tracts for conveyance.  
 IN WITNESS WHEREOF, the said Florida Inland Navigation District has caused this certificate to be signed by its Chairman and attested by its Secretary and its corporate seal to be hereto affixed on this 10th day of JANUARY A.D. 1931.

*J.F. Church* Witness. By *Chas. F. Burgman* Chairman  
*Harlan H. Pridem* Witness. Attest: *D.H. Conkling* Secretary.

**TITLE AND INDEX SHEET**  
 Being Sheet No. 1 of 9 Sheets of a map of the Florida East Coast Canal through Martin County, Florida, contains all legal certificates and acknowledgments appertaining to said map; also an index Map showing the general location of said Canal and the sheet numbers of the individual sectional maps, numbered from 2 to 9 inclusive, showing detailed location in each section.



WE HEREBY CERTIFY: That this map consisting of 9 sheets, including this "TITLE AND INDEX SHEET", numbered 1, and 8 map sheets, numbered 2 to 9 inclusive, is a true and correct representation of a survey of the Florida East Coast Canal in Martin County, Florida, made by us during 1928, 1929 and 1930; that the measurements shown thereon are correct; and that Permanent Reference Monuments have been established at the locations thereon designated.

CHARLTON & DAVIS, CIVIL ENGINEERS  
 By *J.F. Church*  
 Registered Engineer No. 665, State of Florida

APPROVED FOR RECORD this 18th day of FEBRUARY A.D. 1931.  
*Wm. H. Hoak*  
 County Surveyor, Martin County

I HEREBY CERTIFY: That this map of the Florida East Coast Canal through Martin County, Florida, made under my direction, is approved by me and is true and correct to the best of my knowledge and belief.  
*G. Youngberg*  
 Chief Engineer, Florida Inland Navigation District.  
 Registered Engineer No. 1221, State of Florida

STATE OF FLORIDA : s.s.  
 COUNTY OF BROWARD:  
 I HEREBY CERTIFY, that on this day personally appeared before me, an officer duly authorized to administer oaths and take acknowledgments, Chas. F. Burgman and D.H. Conkling, respectively, Chairman and Secretary of the Florida Inland Navigation District, a political subdivision of the State of Florida, to me well known to be the persons described in and who executed the foregoing certificate and severally acknowledged the execution thereof to be their free act as such officers, for the uses and purposes therein mentioned, and that they affixed thereto the official seal of said District and that the said certificate is the act of said District.

IN WITNESS WHEREOF, I have hereunto set my hand and official seal at FT. LAUDERDALE in the County of BROWARD, State of Florida, this 10th day of JANUARY, A.D. 1931.

*J. B. Fraser*  
 Notary Public, State of Florida.

My Commission expires MAR. 21, 1934.

I HEREBY CERTIFY that this plat complies with the provisions of "An Act to Regulate the Making of Surveys and Filing for Record of Maps and Plats in the State of Florida", Approved by the Governor, June 11, 1925.

*J.P. Pomeroy*  
 Clerk of the Circuit Court, Martin County, Florida  
 By \_\_\_\_\_  
 Deputy Clerk.

This is a true copy of the Original Plat of Record of "FLORIDA EAST COAST CANAL - MARTIN COUNTY - sheet 1" Plat Book 2 Page 1 Martin County, Florida.  
 Verified *J.P. Pomeroy*  
 REGISTERED SURVEYOR #665

**INTRACOASTAL WATERWAY**  
 FROM JACKSONVILLE, FLA TO MIAMI, FLA.  
**FLORIDA EAST COAST CANAL**  
 SHOWING LOCATION AND RIGHT OF WAY THROUGH  
 MARTIN COUNTY, FLORIDA.  
 PREPARED FOR  
**FLORIDA INLAND NAVIGATION DISTRICT**  
 UNDER THE DIRECTION OF  
 GILBERT A. YOUNGBERG CHIEF ENGINEER.  
 BY  
 CHARLTON & DAVIS, CIVIL ENGINEERS.  
 DECEMBER 1930.  
 SHEET NO. 1 OF 9 SHEETS

TRACED BY	V.V.W.
CHECKED "	J.P.C.
RECHECKED "	F.E.D.
APPROVED "	H.M.L.
O.K.	J.F.C.